

MAJOR LIVE/WEBCAST & ONLINE AUCTION

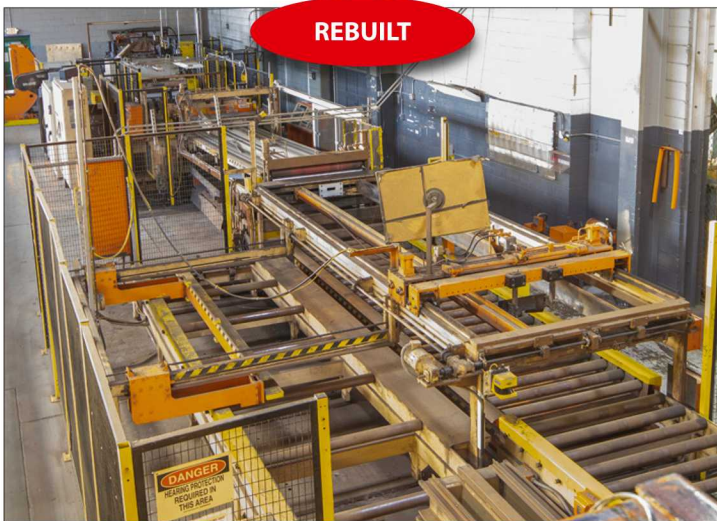
3-DAY AUCTION - JAN. 28, 29 & 30, 2020

INSPECTION: January 27 & by Appointment Only • LOCATION: St. Cloud, Minnesota

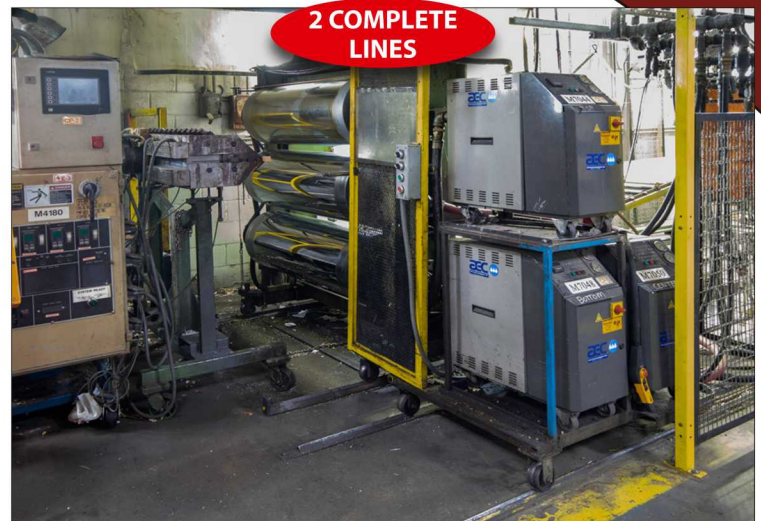


Electrolux Appliance Manufacturing Plant Closing

OVER 1,000 SEPARATE LOTS: Cut to Length Lines, Tube Mill and Stretch Reducing Line, CNC Tube Bender, Extrusion Lines, Injection Molder, Presses, Hydraulic Presses, Roll Formers, Complete Manufacturing Lines, Forklifts, Robots, Bridge Cranes, Shears, Brakes, Welders, Woodworking, 3/4 Miles Copper & Aluminum Bus Duct, \$4+ Million MRO & Parts Inventory & Much More.



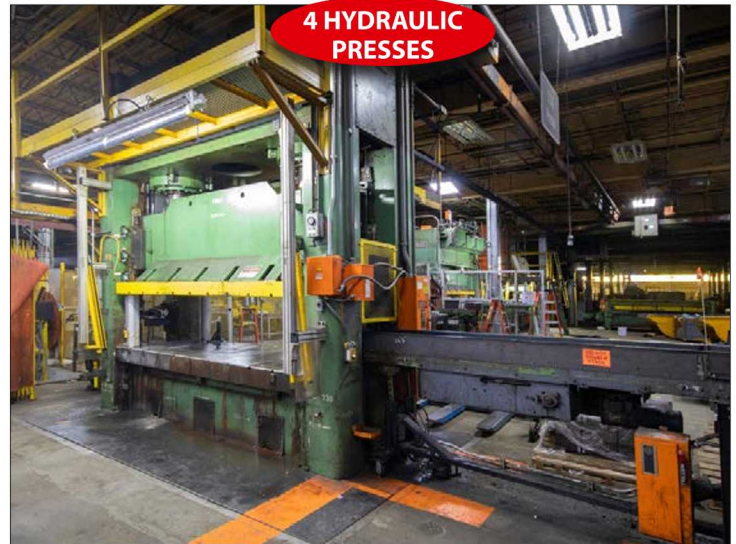
CUT TO LENGTH LINE: Progressive B&K Cut to Length Line



EXTRUSION LINES: (2) Prodex Sheet Extrusion Lines



Minster S2-100-48-30 SS, 100 Ton, 48" x 30", 8" Str, 23" SH, 45/90 SPM



Pacific Hydraulic Press 200D-1036, 200 Ton, SS, 123" x 36" Bed, 18" Str

HYPERAMS
asset maximization services



ROBERT LEVY ASSOCIATES, LLC
CAPITAL ASSET MANAGEMENT DONE RIGHT

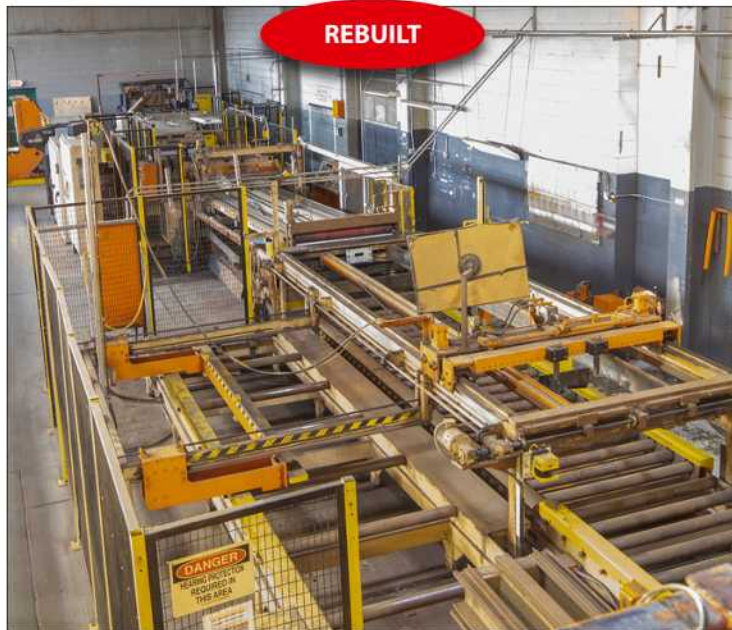
Auctioneer Garth B. Wilber
MN Lic. #7305026

Buyers Fee of 15% Onsite
& 18% Online Applies

Call Burdette 847-499-7029 • HyperAMS.com

DAY 1 - LIVE/WEBCAST AUCTION

Starts 10:00 AM (CST), January 28, 2020



REBUILT

CUT TO LENGTH LINE: Progressive B&K Cut to Length Line, 20,000# Uncoiler, Peeler, 6 High B&K Precision Leveler (60" Roll Face, 1.156" Roll Diameter 7 Flights of Backups)



TUBE MILL & STRETCH REDUCING MILL: Yoder Tube Mill and Stretch Reducing Mill-DE Yoder Uncoiler, Shear End Welder, Kent Horizontal Floop, 5 Stand rafted Forming Stand, ERW Welder, Yoder rafted 10 Stand Sizing and Reducing Mill, Annealing Line, Nitrogen Atmosphere Coolant Tube, Yoder 2 Spool Rewinds and Cut Off



CNC TUBE BENDER: CNC Tube Bender Cell (M-6941), Bends 15 to 20 3/16" Refrigeration Tubes at a Time with Robot Unloader/ tacker



2 COMPLETE LINES



EXTRUSION LINES: (2) Prodex Sheet Extrusion Lines, One 6" and One 4.5", Both Have 3 Roll Calender, Puller with Trimmers, Wysong Shear and Stacker, Extruder



2 COMPLETE LINES

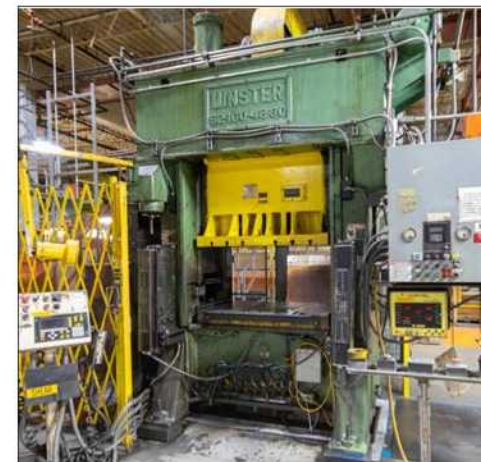
EXTRUSION LINE: (2) 3.5" Akron Profile Extrusion Line with Cooling, Puller and Cut-Off, Extruder: Mdl. PAK3500EX, 3.5" Dia Screw, 24:1, 460V



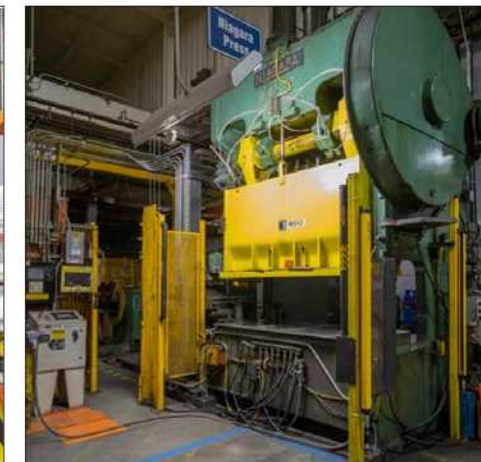
INJECTION MOLDER: Cincinnati 850 Ton Model VH850-140 Injection Mold Machine with Wittman Robot, 107.8 oz Shot, 46" x 37" Btwn. Posts, 58" x 56" Platen, 62" Max. DL, Knock Outs, Mold Vision System installed 2018



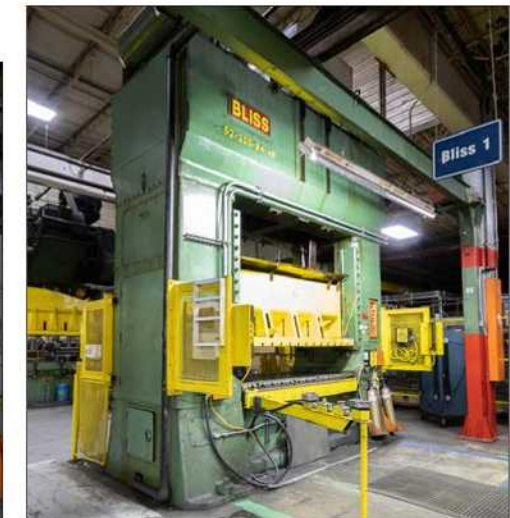
PLASTIC SUPPORT EQUIPMENT: Conair Plastic Granulator / Grinder Model LC 56, 28" Blades, Screen 5/8", 75 HP



PRESS: Minster S2-100-48-30 SS, 100 Ton, 48" x 30", 8" Str, 23" SH, 45/90 SPM



PRESS: Niagara B-6 1/2-77, 200 Ton, GFDC, 77" x 32" Bed, 6" Str, 22.5" SH, 29 SPM



PRESS: Bliss S2-200-84-48, 200 Ton, SS, 84" x 48" Bed, 16" Str, 26" SH, 20 SPM, Cushion



Pacific Hydraulic Press 200D-1036 200 Ton, 36" x 123" Bed, 9 SPM

PRESSES

- Bliss 9-150, 400 Ton, SS, 150" x 60" Bed, 10" Str, 30" SH, 14 SPM
- Verson S2-400-120-60T, 400 Ton, SS, 120" x 60" Bed, 14" Str, 50" SH, 16 SPM
- Cleveland S2-600-108-86, 600 Ton, SS, 108" x 66" Bed, 18" Str, 32" SH, 14 SPM
- Niagara Press Model AF 4 1/2, 75 Ton, OBI, 36" x 24" Bed, 4" Str, 42 SPM
- L&J Press 60-2-42 Press, 60 Ton, 42" x 28" Bed, 1.5" Str, 15" SH, 123 SPM (VFD)
- Verson S2-250-108-48T, SS, 250 Ton, 108" x 48" Bed, 12" Str, 25" SH, 14 SPM
- Clearing SD-2200-84-48T, 200 Ton, SS, 84" x 48" Bed, 16" Str, 32" SH, 18 SPM
- Clearing SD-2200-84-48T, 200 Ton, SS, 84" x 48" Bed, 16" Str, 32" SH, 20 SPM
- Bliss SS2-100-84-42, 100 Ton, SS, 84" x 42" Bed, 10" Str, 29" SH, 30 SPM
- Clearing S2-250-84-48, 250 Ton, 120" x 60" Bed, 14" Str, 21" SH, 18 SPM

HYDRAULIC PRESSES

- Pacific Hydraulic Press 600D-S4, 600 Ton, SS, 123" x 54" Bed, 18" Str, 36" DL
- Pacific Hydraulic Press 300-D10-60, 300 Ton, SS, 123" x 60" Bed, 18" Str, 33" DL
- Rogers MD300-8456, 100 Ton, 4 Post, 84" x 60" Bed, 27" Str, 32" DL

HYPERAMS
asset maximization services

GERRARD GROUP

ROBERT LEVY ASSOCIATES, LLC
CAPITAL ASSET MANAGEMENT DONE RIGHT

The auction sale dates of specific equipment may vary prior to the 3-day auction. The asset sales dates listed in this brochure are based on the information available at the time of printing. Please check the final online bidding asset lists at Bidspotter.com prior to the sale.

Call Burdette 847-499-7029 • HyperAMS.com

(CONTINUATION) DAY 1 - LIVE/WEBCAST AUCTION

Starts 10:00 AM (CST), Jan. 28, 2020

PRESS FEED EQUIPMENT

- Rowe Uncoiler Model 40040-DSJ, 40,000# Cap, 40" Wide, 60" OD, w/Coil Car
- Rowe Uncoiler Model 4020-DVS, 4,000# Cap, 20" Wide, 60" OD
- American Steel Line Uncoiler, Model 60, 6000# Cap, 36"
- AutomaticFeed Co Uncoiler Model 23340, 36" Wide
- Egan Uncoiler Model 600-24
- RRE Uncoiler, 24" Max, 4000# Max
- Servo Max II Press Feed Model SMX 36, 36" Wide, .048
- Rowe Press Feed Model FDC-053-240, .060 Thick, 40" Wide
- Press Room Equipment 12" x .063, Press Feed
- Rowe Press Feed, Model FST/AC 1-10 .125" Thick, 10" Wide
- Rowe Press Feed Model PM-LT3-224, 24"
- Rowe Press Feed 18"
- Rowe Model A10-C3000 Straightener, Min .020, Max .105
- Rowe Model C3-40 Straightener Min .020, Max .175"



MANUFACTURING LINES



Scott Door Blank Line



Strilich Line Consisting of- Coil Car Tipper 20,000 lb Cap., Strilich 20,000 lb x 48" Uncoiler, Squaring Guides and Servo Feed, Bradbury 75 ton 4 Post Press (7' x 4'), Pinch Roll and Flying Shear, Inspection and Stacker, Pallet Stuffer, Outfeed Conveyor, Pallet Roll Over Unit

Exterior Box Production Line consisting of--Infeed Conveyors, Desatcker, Notch and Punch Station (12 Station) (M6637), Strip Orientator, Centering Bench, Olma 36 Stand Duplex Rollformer, Exit Conveyor, 90 Degree Conveyor, Glue and Mastic Applicator 20 Heads, Tube attach Bench, Toe Fold, Tilt Up Unit, U Fold Machine, Toe Fodl Operation, Toggle Lock, Final Crimp, Base Load, Lance and Lock, Cinch, Unload, Auto Tap, Auto Glue

(2) Scott Inner Liner Lines

STORAGE SILOS

- Silo 39.5" Tall x 13' Diameter, 5,501 Cu. Ft. (Inc Cone)
- Silo 40" Tall x 12' Diameter, 4,778 Cu. Ft. Full (Inc Cone)
- Silo 45" Tall x 12 Diameter, 5288 Cu. Ft. Full (Inc Cone)
- Silo 48.5" Tall, 4,750 Cu Ft



14 ROBOTS

FANUC ROBOTS: (14) Fanuc Robots-R2000iB's, M20iA's, M710iC's



FORKLIFTS, BATTERIES, CHARGERS

- (3) Hyster E30XL Forklifts
- (2) Hyster E50XL Forklifts
- (1) Hyster E50XM Forklift
- (1) Hyster J40XMT Forklift
- (5) Yale ERC050RGN36TE084 Forklifts
- (3) Yale ERC060ZGN36TE088 Forklifts
- (1) Toyota 5FBCU25 Forklift
- (1) Toyota 5FBCU15 Forklift
- Big Joe Walkies
- (2) Toyota Tuggers
- OVER 40 Battery Chargers & OVER 40 Batteries from Power Tech, Hawker, DEKA, CID,
- Forklift Repair Parts, Ramps, Battery Racks

ROLL FORMERS

- Olma Duplex 36 Stand Roll Former
- Anderson Auto One Sided 22 Stand Roll former
- Anderson 5 Stand Roll Former

VACUUM FORMERS

- Brown CSH 3870 Inline Vacuum Former
- (2) Brown Model R244- 4 Stage Rotary Vacuum Former
- (2) Brown Model R244- 3 Stage Rotary Vacuum Former

AIR COMPRESSORS

- Cameron TA6000 1250HP Centrifugal Compressor
- Quincy QSI-1500 Air Compressor, 300 HP
- (2) Sullair Air Compressors Model 20-100L
- Zeks MultiPlex Air Dryer, Model 6000HSFMW40Z02, 3 Module
- Pneumatech 5000 CFM Air Dryer, Model PWD050AD37
- Air Receivers

TUBE STRAIGHTENER/CUTOFF

- Burr Oak STCO Tube Straightener, Cutoff and end finishing (AGE)
- Burr Oak STCO tube straightener, cut off and end finishing
- Yoder Tube Cut to Length Line 40' length cap.
- Yoder Tube Cut to Length Line 40' length cap.

BURN OFF OVEN

- Steelman Model 1288BA Burn Off Oven, 1,640,000 BTU, Nat. Ga

FOAMING EQUIPMENT

- Multiple Foaming Units with Mixers, Chillers, Pumps and Heads

DUST COLLECTOR

- Camfil Farr Model GS4, Year 2015

BUS DUCT

- Over 3,750 Feet of Assorted Bus-Gould, Bulldog, ITE, Square D, Siemens

BRIDGE CRANES

- Shaw Box 10 Ton Bridge Crane, Appx 45" Span, Remote Control
- Sharron Federal Bridge Crane, Appx 45' SpanRemote Control
- Shaw Box 5 Ton Underslung Bridge Crane, Remote Control, Appx 16' Span with Appx 65' Runway

MISC IN BOTH DAY 1 and 2

- 360 Jibs, Air Hoists, Electric Hoists, Cardboard Bailers, Donaldson Torit Easy Trunk Dust Collector (15HP), Lifting Chains, Chain Hoists, Torch Carts, Jib Cranes, Angle Grinders, Bar clamps, Flammable Cabinets, Vises, Ladders, Air Hose Reels, Air Tools, Carts and Racks, Hand Tools, Saws, Drills, Perishable Tooling, Cabinets, Steel Stock, Work Benches, Steel Saw Horses, and Much More

DAY 2 - ONLINE AUCTION

Starts Ending 10:00 AM (CST), January 29, 2020



SHEAR: Niagara Power Squaring Shear 3/16" x 126" Capacity Cat# 710-B



BRAKE: Chicago Dreis and Krump Finger Brake 14 gauge x 10'



LATHE: LeBlond Makino Regal Servo Shift Lathe 18" x 56" with 2 Axis DRO



SURFACE GRINDERS



SHEAR: Niagara Power Squaring Shear 3/16" x 126" Capacity

(CONTINUATION) DAY 2 - ONLINE ONLY AUCTION

Starts Ending 10:00 AM (CST), Jan. 29, 2020



VERTICAL MILLS



GRINDERS: ELB Schliff Surface Grinder 14" x 34" Magnetic Chuck, Auto Feed



WELDER: Spot Weld Inc Spot Welder 100KVA



IRON WORKER: Uni-Hydro 42 Ton Iron Worker



MILLING MACHINE: Bridgeport Vertical Mill 9" x 48" Table, 2 Axis DRO, Auto Feed



360 JIB

SHEARS

- Niagara Power Squaring Shear 3/16" x 126" Capacity Cat# 710-B
- Niagara Shear 10 Gauge x 10"
- Brown-Boggs Power Shear 14 Gauge x 6'

BRAKE

- Chicago Dreis and Krump Finger Brake 14 gauge x 10'
- Whitney Jensen 14 Gauge x 6' Finger Brake

SAWS

- DoAll Vertical Band Saw Model 16-SFP
- Jepson 14" Chop Saw
- Everett 16" Chop Saw
- Grob Vertical Band Saw Type N518
- Jet Horizontal Band Saw 10" Capacity Model HBS-10M
- Delta Rockwell 10" Chop Saw

WOOD WORKING

- Delta 12" Radial Arm Saw
- Delta 10" Unisaw Table Saw
- Delta Rockwell 18" Planner
- Boice Crane Planner 6"

CRIMPER, IRON WORKER, THREADER

- Aeroquip Crimping Machine
- Ridgid 535 Pipe Threader

GRINDERS

- Nicco Surface Grinder 16" x 32" Magnetic Chuck, Auto Feed
- K.O. Lee Surface Grinder, Model S618H2 6" x 18" Magnetic Chuck, Auto Feed
- Brown and Sharp #13 Cylindrical Grinder
- Hammond Grinder Model ND-12 2 HP
- Various Pedestal Grinders

LATHES

- LeBlond Makino Regal Servo Shift Lathe 18" x 56" with 2 Axis DRO
- Colchester Dominion Lathe 15" x 46"
- Monarch Lathe 16" x 54"
- Hendey Lathe 16" x 54"
- Southbend Lathe 11" x 36"
- Southbend Table Top Lathe 9" x 24"
- Southbend Lathe 16" x 84"

MISC TOOLS

- Hydraulic Test Bench
- Famco 3B Arbor Press
- Jet 15 Ton Hydraulic Press
- ITW Dynatel Dynamini Adhesive Supply Unit
- Rotex Manuel Punch
- Porter Cable Belt Sander
- Dake 25 Ton Hydraulic Press
- Greenerd Hydraulic Press
- Belt Sander 3"

MILLING MACHINES

- Ultima Vertical Mill Model 3VK, 10" x 50" Table, 2 Axis DRO, Power Feed
- Alliant Vertical Mill 9" x 50", 2 Axis DRO, Power Feed
- Dyna Mechtronics Vertical Mill 9" x 42" Table, 3 Axis DRO with Coolant
- K&T Rotary Head Milling Machine Model D 16" x 36" Table
- Bridgeport Vertical Mill 9" X 32" Table,

DRILLS

- American Hole Wizard Radial Arm Drill Press 3' x 9" With Knee Table
- Avey Drill Press with 40" x 30" Table
- Wilton Floor Model Drill Press
- Walker Turner Drill Press
- Walker Turner Drill Press 30" x 22" Table

MISC IN BOTH DAY 1 and 2

360 Jibs, Air Hoists, Electric Hoists, Cardboard Bailers, Donaldson Torit Easy Trunk Dust Collector (15HP), Lifting Chains, Chain Hoists, Torch Carts, Jib Cranes, Angle Grinders, Bar clamps, Flammable Cabinets, Vises, Ladders, Air Hose Reels, Air Tools, Carts and Racks, Hand Tools, Saws, Drills, Perishable Tooling, Cabinets, Steel Stock, Work Benches, Steel Saw Horses, and Much More.



WELDERS

- Hobart Welder TR-250 AC/DC Welder
- Miller XMT 304 CC/CV Welder
- Miller Welder with Cart and Wire Feed
- Miller Millermatic 252 Welder with Wire Feeder
- Entron Welder with Gun Type G3231



GRINDERS: Brown and Sharp 618 Micro Master Surface Grinder, 6" x 18" Magnetic Chuck, Auto Feed



2 CARDBOARD BAILERS



STEEL STOCK



SAW: Marvel Model 8 Vertical Band Saw

DAY 3 - ONLINE AUCTION

Starts Ending 10:00 AM (CST), January 30, 2020



\$4 MILLION MRO & PARTS INVENTORY

From Manufacturers Allen Bradley, ASCO, Fafnir, Siemens, Fanuc, Indramat, Rexroth, Sic Banner, Ross, Blackhawk, Milwaukee, Enerpac, Vickers, Swagelok, Mercer, Pyles, Graco, Parker, and More.

Maintenance and Repair Parts including-Large Assortment of Bearings, AB SLC Racks/Processors, AB Control Logics Racks/Processors, PLC5 Racks, AB Drives, PanelView's, Sic Controls and Light Curtains, Indramat Units, Rexroth Parts, Fanuc Parts, Electrical Panels, Safety Switches, Breakers, Transformers, Power Supplies, Busway Plugs, Connectors, Gear Boxes, Motors, Servo Drives, Pumps, Drive Chains, Vacuum Pumps, Castors, Air Cylinders, Hydraulic Cylinders, Conduit, Conduit Fittings, Fasteners, Accumulator Tanks, Electrical Wire, Relief Valves, Shut Off Valves, Flow Control Valves, ASCO Valves, Ross Valves, Seal Kits, Rings Seal Kits, Blackhawk/Milwaukee/Enerpac Parts, Air-DOR/Excello/Hydro-Line/Vickers Parts, Binks Parts, Swagelok Fittings, Mercer Parts, Pipe Fittings, Welder Parts, Vacuum Gauges, Leak Tester Parts, Mercoid, Pyles Pump Parts, Blades, Sanding Belts, Pump Parts, Springs, Graco Parts, Hoist Parts, Brass Fittings, Pet Cocks, Gas Fittings, Parker Parts, Hydraulic Fittings, Thermometers, Oil Seals, Hosing, Pulleys, Sprockets, Couplers, Clutches, Gasket Material, Press Repair Parts, Wire Racks, Honeywell Parts, Control Cables, Banner Parts, Timers, Network Cable, Copper and Aluminum Tubing, Drive Belts, Filters, Threaded Rod, Heaters, Air Hoses, Torch Gauges and Parts, Store Room Racking.

The auction sale dates of specific equipment may vary prior to the 3-day auction. The asset sales dates listed in this brochure are based on the information available at the time of printing. Please check the final online bidding asset lists at Bidspotter.com prior to the sale.

Call Burdette 847-499-7029 • HyperAMS.com

MAJOR LIVE/WEBCAST & ONLINE AUCTION

Electrolux Appliance Manufacturing Plant Closing



CINCINNATI 850 TON INJECTION MOLDER



VERSON 400 TON PRESS



(2) AKRON EXTRUSION LINES

3-DAY AUCTION - JANUARY 28, 29 & 30, 2020

HYPER 

asset maximization services

INSPECTION: January 27 & by Appointment Only

LOCATION: 701 33rd Ave. N, St. Cloud, Minnesota

Call Burdette at 847-499-7029 or go to HyperAMS.com

OVER 1,000 SEPARATE LOTS: Cut to Length Lines, Tube Mill and Stretch Reducing Line, Extrusion Lines, Injection Molder, Presses, Complete Manufacturing Lines, Forklifts, Robots, Machine Tools, Woodworking, 3/4 Miles Copper & Aluminum Bus Duct, \$4+ Million MRO & Parts Inventory & Much More.

Buyers premium of 15% onsite and 18% online applies to all purchases. Auctioneer Garth B. Wilber MN Lic. #7305026



MANY FORKLIFTS



Call Burdette 847-499-7029 • HyperAMS.com

LOCATION: St. Cloud, Minnesota

INSPECTION: January 27 & by Appointment Only

AUCTION DATES: January 28, 29 & 30, 2020 at 10:00 AM CST

3-DAY AUCTION JAN. 28, 29 & 30

**Electrolux Appliance
Manufacturing Plant Closing**

**MAJOR LIVE/WEBCAST
& ONLINE AUCTION**

1501 N Michael Drive
Wood Dale, IL 60191

asset maximization services

HYPER 